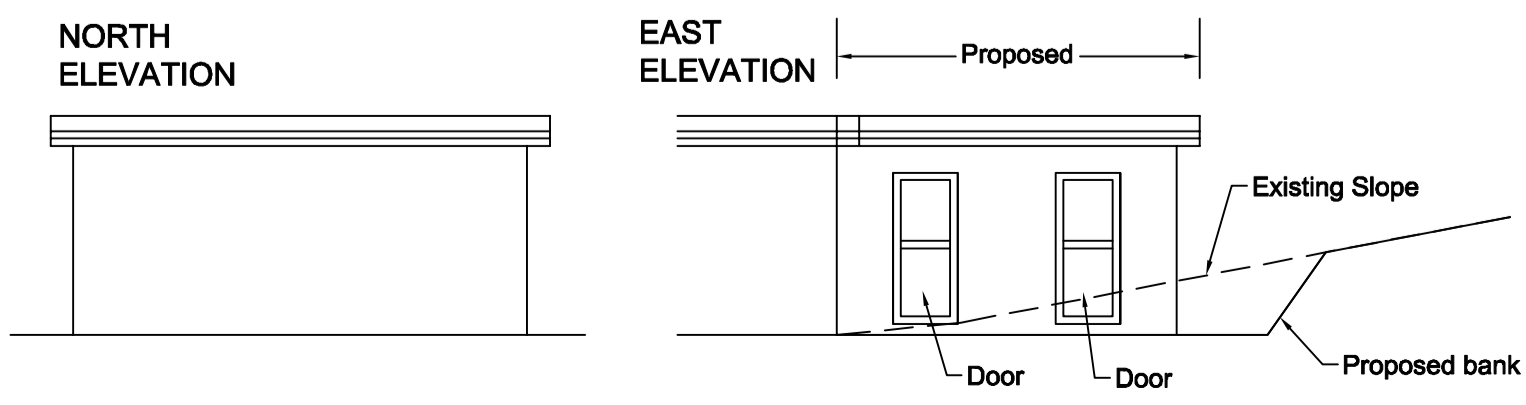
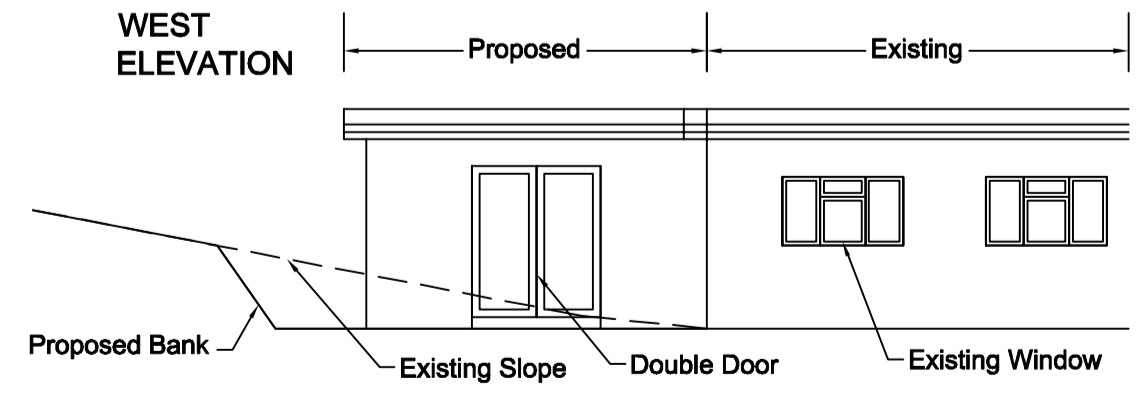
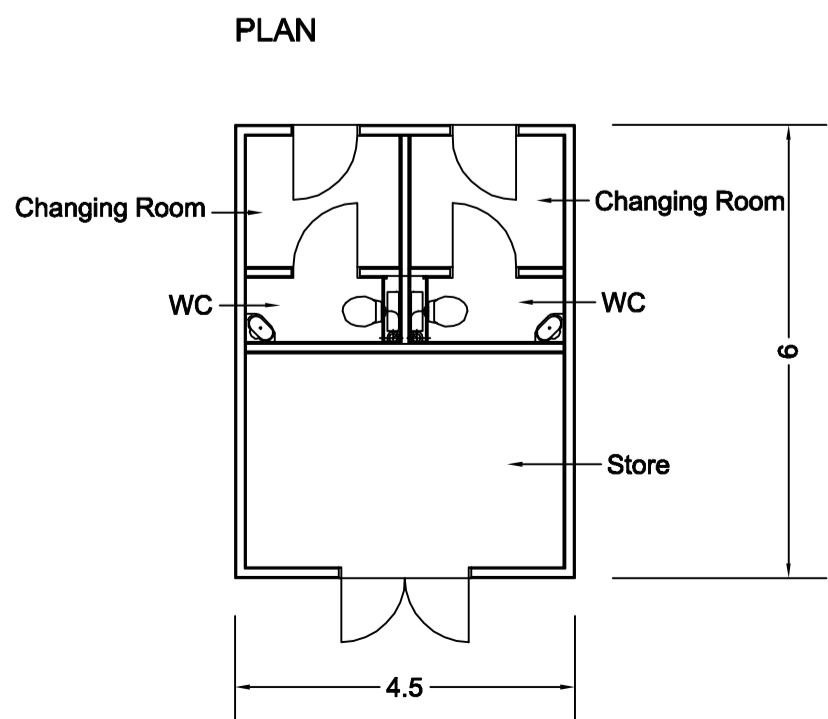


PROPOSED EXTENSION TO VILLAGE HALL TO ACCOMMODATE STORE, WC AND CHANGING AREAS
ALL MATERIALS AND FINISHES TO MATCH EXISTING BUILDING
1:100 SCALE

- Play Equipment Schedule:**
- P1) Eibe 5550855 basis aerial cableway atlas30m
 - P2) Eibe 5598090 minimondo little beetle spring rocker
 - P3) Eibe 5671250 basis snake spring rocker
 - P4) Eibe 5588060 double bay swing
 - P5) Proludic J831 Gyrospiral
 - P6) Kompan Gxy 8014 Spica
 - P7) Kompan Gxy 8015 Spica
 - P8) Huck Art. 20.01.020 Space Capsule
 - P9) Timberline Package B Woodlander duo.



Existing path to be resurfaced with Tegula type blocks, laid in random courses, perpendicular to edge and edged with approx 200mm wide course laid stack bond. Edgings to be haunched. Finished surface level to be similar to existing